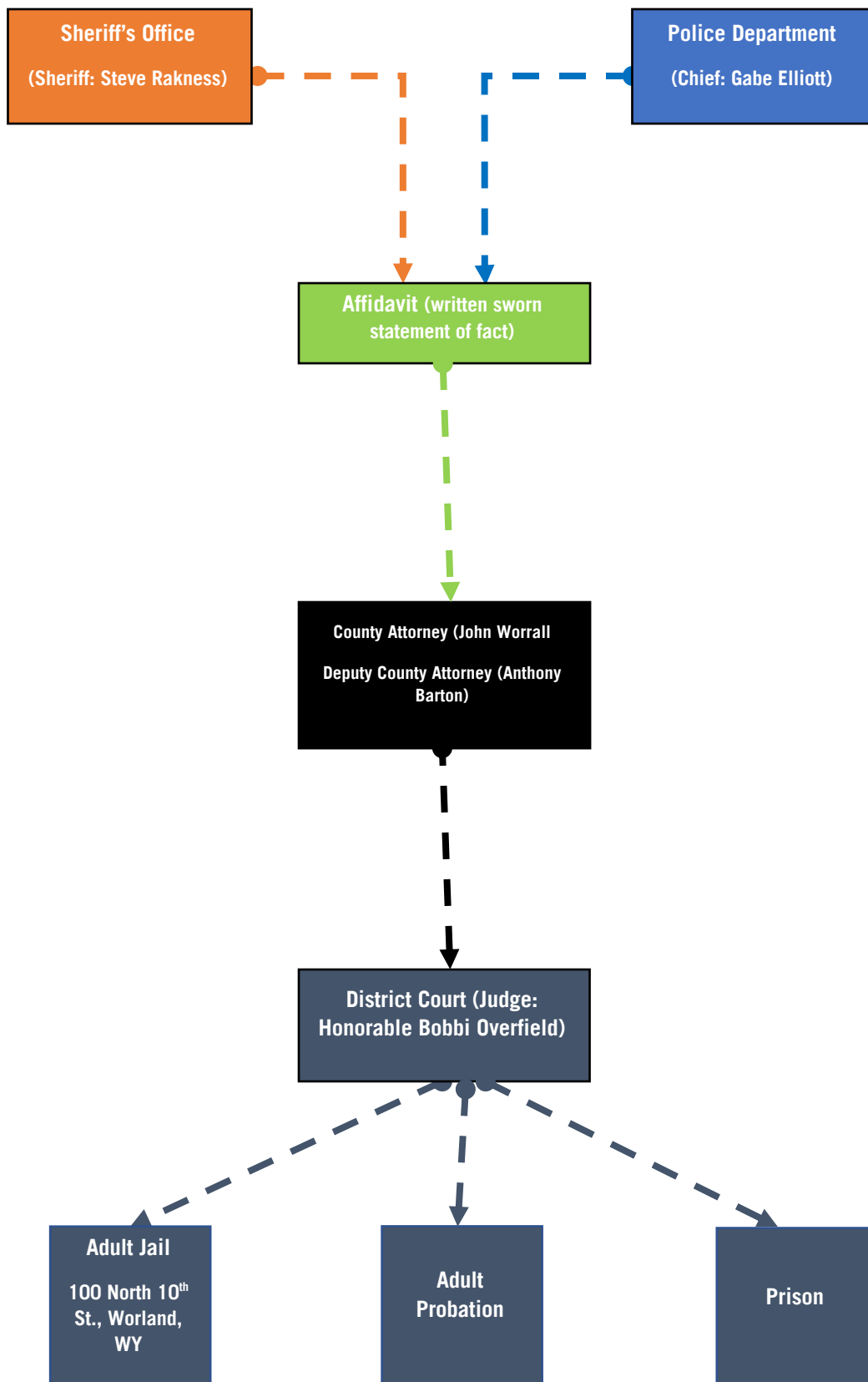


WASHAKIE COUNTY JUSTICE SYSTEM FLOW CHART FOR A YOUTH CHARGED AS AN ADULT IN DISTRICT COURT



*A youth, 17 and over can enter into District Court if they have been charged as an adult for a felony crime. This would mean that they can legally be held in the Washakie County Adult Jail. The choice to house a juvenile in jail is at the sole discretion of the County Attorney. If a youth is charged as an adult, they would no longer have the same disposition opportunities as youthful offenders.

* A youth 16 and under can be charged in Juvenile and moved to District Court upon the County Attorney's request.